



Exclusive Apartments in Playa de Pals

284.000 €

Discover the New Apartment Promotion in Playa de Pals. Located in the best area of Playa de Pals, this new apartment promotion under construction offers the perfect combination of contemporary style and exclusive amenities. Situated very close to all the services in the area, just a few meters from the beach and the golf course, as well as the historic center of Pals, these beautiful apartments are designed with a modern and practical flair. Outstanding Features:

- Variety of Options: Available in various configurations, with prices ranging from 264,000 euros to 367,000 euros depending on the selected apartment.
- Modern and Elegant Design: The building has been designed with a modern aesthetic that perfectly integrates with the traditional charm of Pals.
- Exclusive Amenities: All apartments feature a heat pump for hot and cold air, and a fully equipped kitchen with the latest generation appliances. The bathrooms are fully equipped, and each home has terraces or a private garden, depending on whether they are on the ground floor or the first or second floor.
- Parking Space: Each apartment includes a parking space in a private underground area, either open or closed.
- Community Pool: In the community area, residents can enjoy a large pool and a green area to relax.
- Spacious Areas: The apartments have three double bedrooms and two bathrooms, as well as options for apartments with two bedrooms and two bathrooms. The ground floors also offer a private garden. Exceptional Lo

Transaction:	Sale	Category:	Flat
Work category:	New construction	Municipality:	Baix Empordà
Surface area:	102 m ²	Rooms:	2
Bathrooms:	2 bathrooms	Terrace:	Yes
Swimming pool:	Yes	Central heating:	Yes
Lift:	Yes		

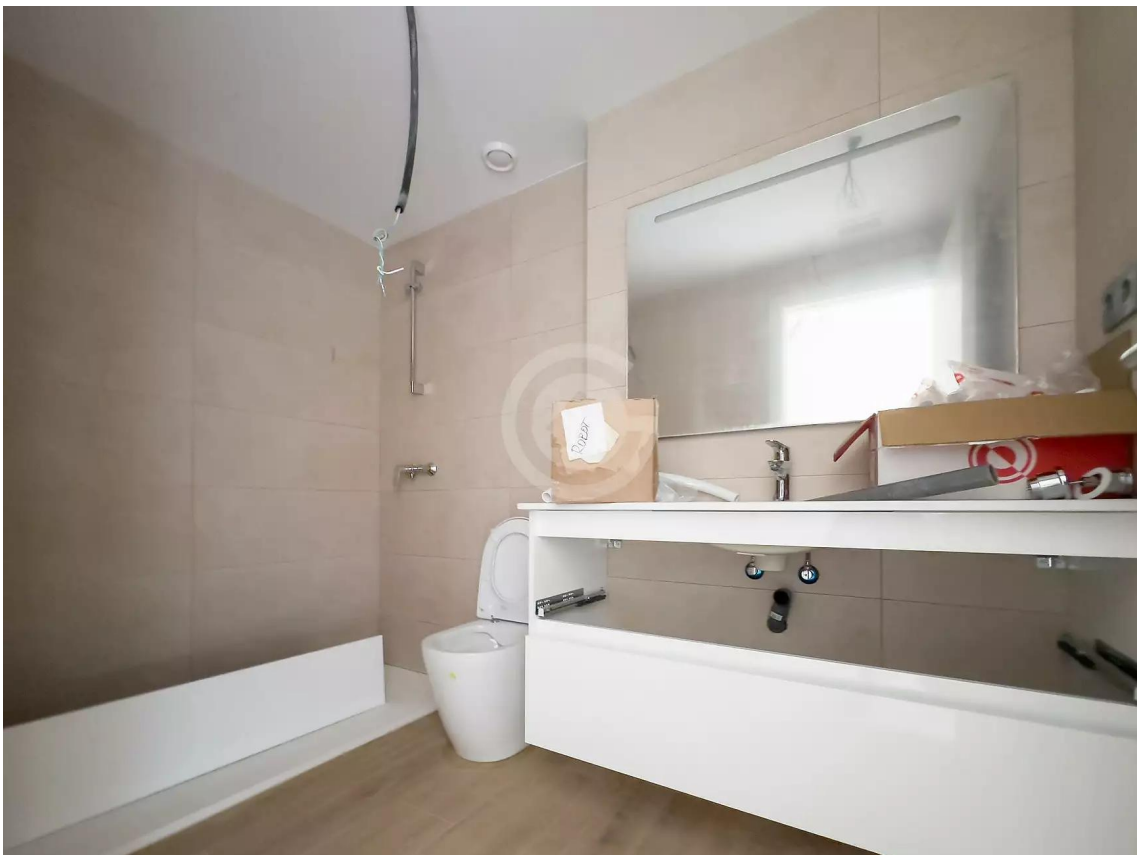














Es poden realitzar les modificacions que la propietat estimi necessàries per exigències d'ordre tècnic, comercial, jurídic o de disponibilitat. Les superfícies declarades són aproximades. El mobiliari, inclos el de la cuina, són il·lustratius.

EL VAIXELL

PLATJA DE PALS



PLANTA PRIMERA - 1



SUPERFÍCIES

Superfície construïda	98.99m ²
Superfície terrassa	14.44m ²



Es poden realitzar les modificacions que la propietat estimi necessàries per exigències d'ordre tècnic, comercial, jurídic o de disponibilitat. Les superfícies declarades són aproximades. El mobiliari, inclos el de la cuina, són il·lustratius.

EL VAIXELL

PLATJA DE PALS



PLANTA PRIMERA - 4



SUPERFÍCIES

Superfície construïda	101.93m ²
Superfície terrassa	13.20m ²

